

Process Engineering Services for the Bought Outs of CFBC boiler

Client: ISGEC Heavy Engineering Ltd, Noida

Project: M/s. SMW ISPAT PVT LTD, Maharashtra

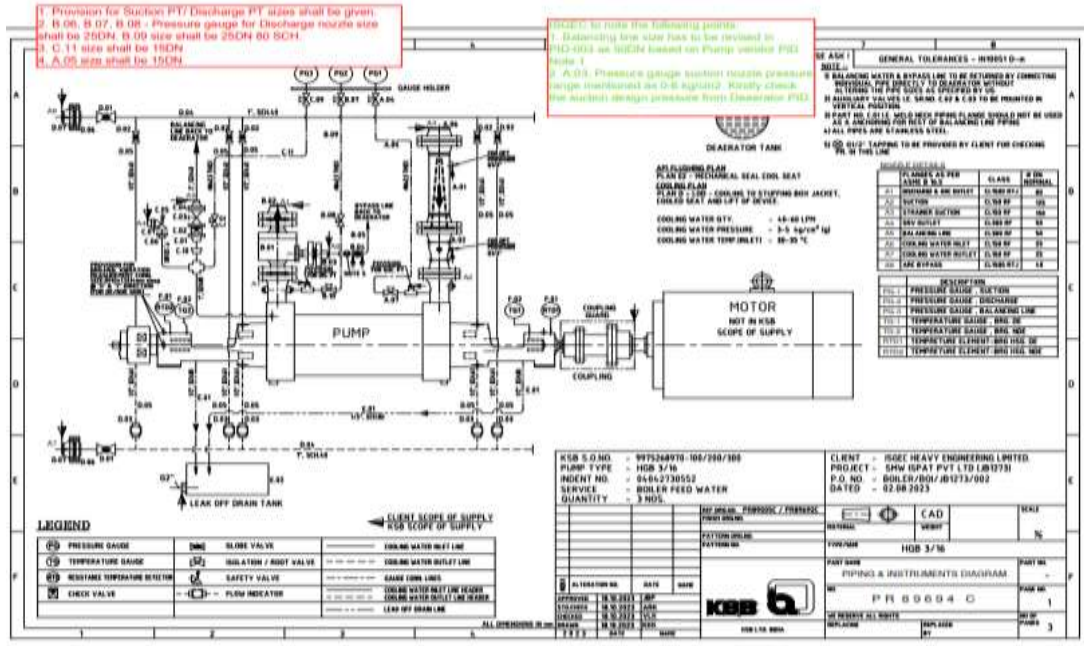
Scope Of Work: Process Engineering Services for a 80 TPH CFBC boiler

- Preparation of technical specification for various bought out components
- Process calculation for Control valves sizing, Silencer Blow back calculation and Attemperator sizing
- Vetting of technical offers
- Vetting of Post order documents
- Preparation of technical data sheet and Startup curves

Process Engineering Services for the Bought Outs of CFBC boiler

Client: ISGEC Heavy Engineering Ltd, Noida

Project: M/s. SMW ISPAT PVT LTD, Maharashtra



PR 89694 D					
PIPING & INSTRUMENT DIAGRAM PART LIST					
ITEM NO.	DESCRIPTION	SIZE / RATING / RANGE	QTY.	MATERIAL	REMARKS
BALANCING LINE					
C.07	WELD NECK FLANGE FOR SAFETY RELIEF VALVE INLET LINE	DN50, 1500 RF, SCH40	1	ASTM A105	KSB SUBVENDOR
C.08	PRESSURE GAUGE FOR BALANCING LINE	150mm DIAL, 0-6 kg/cm ² CORN. 1/2"	1	ASTM A105	GEN. INSTRUMENTS
C.09	ISOLATION VALVE FOR PRESSURE GAUGE	150 1/2"	1	A 102 GR. F316	KSB SUBVENDOR
C.10	EXPANDER	DN50, 1500 RF, SCH40	1	A 102 GR. F316	KSB SUBVENDOR
C.11	TUBES FOR PRESSURE GAUGE	1/2" DIA, 1500 RF, SCH40	1	A 102 GR. F316	KSB SUBVENDOR
C.12	ROOT VALVE FOR PRESSURE GAUGE	150 1/2"	1	A 102 GR. F316	KSB SUBVENDOR
COOLING WATER INLET/OUTLET					
D.01	GLOBE VALVE FOR COOLING WATER INLET/OUTLET LINE	150 1/2"	2	A105	KSB LTD.
D.02	GLOBE VALVE FOR COOLING WATER INLET/OUTLET LINE	150 1/2"	5	A105	KSB LTD.
D.03	FLOW INDICATOR FOR COOLING WATER OUTLET LINE	150 1/2"	5	IS5517 450B-ZINC PLATED	TECHNO FLOW
D.04	PIPE FOR COOLING WATER INLET/OUTLET	DN25 (1/2") SCH40	2	A 312 GR. TYPE 304	KSB SUBVENDOR
D.05	PIPE FOR COOLING WATER INLET/OUTLET	DN15 (1/2") SCH40	10	A 312 GR. TYPE 304	KSB SUBVENDOR
D.06	SOCKET WELD FLANGE FOR CW INLET & OUTLET HEADER	DN25, 1500 RF	2	A240 TYPE 316	KSB SUBVENDOR
D.07	WELD NECK COUNTER FLANGE FOR CW INLET & OUTLET HEADER	DN25, 1500 RF	2	A102 GR. F316	KSB SUBVENDOR
PUMP/RAIN LINE					
E.01	PIPE FOR LEAK OF DRAIN	DN15 (1/2") SCH40	2	A312 GR. TP316L	KSB SUBVENDOR
E.02	LEAK OFF DRAIN TANK	-	1	M.S.	KSB SUBVENDOR
INSTRUMENTS					
F.01	RTD FOR BEARING TEMP. DE/NOE	DUPLY TYPE: PT 100 3 WIRE, CONN. - GV2"	2	DE - CAST AL. 55	GEN. INSTRUMENTS
F.02	TEMP. GAUGE FOR BRG. DE & NOE	150mm DIAL 0-120 °C CORN. 1/2"	2	BODY / AISI 304 STEM / AISI 316	GEN. INSTRUMENTS
NOTE: ALL PIPES ARE STAINLESS STEEL					